



**SEFRAG ACCESSORIES • MICROVESSEL**

**Application**

The SELFRAG Lab Microvessel is designed for the selective fragmentation of small quantities (1 - 2 g) of solids in a cross-contamination-free closed setup.

**Mode of operation**

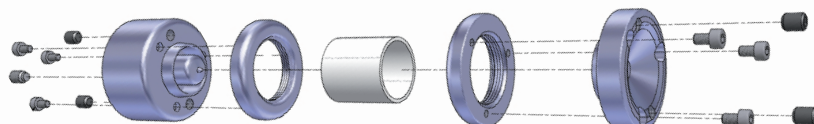
The loaded Microvessel is operated inside the water filled standard process vessel PG V 2.8+2.10



**Technical specifications**

**Design**

The micro container set consists of: electrode top, counter-electrode bottom, PE sleeve as a liner and 2 stainless steel fixing-rings to attach liner with top and bottom.



**Materials**

Materials	complete	electrode	counter-electrode
Working Steel	Part-Nr: 151031	Part-Nr: 151034	Part-Nr: 150776
Stainless Steel	Part-Nr: 151032	Part-Nr: 151035	Part-Nr: 150784
Copper	Part-Nr: 151033	Part-Nr: 151036	Part-Nr: 150833

**Each set comes with**

Fixing rings	stainless steel (Part-Nr: 150781)
Liner	PE sleeve (Part-Nr: 150780)

**Dimensions**

Max. L x W x H	40 x 40 x 54 mm
Volume	4.7 cm <sup>3</sup>

**Capacity**

Max. sample volume	2.5 cm <sup>3</sup>
Maximal size of single piece	Ø 18 x 7.5 mm

**Operating Parameters**

Max. Voltage	90 kV
Max. Discharges per batch	20 pulses
Lifetime Electrode	500-1000 pulses
Pulse rate	2Hz or less

**Plastic sleeve is for single use only**



**For Customer Service contact:**